

# OakGate R300-G5-Basic 3U Rackmount Appliance for PCI Express® Gen5



## Key Features

- PCI Express® 5.0 (PCIe Gen5) compatible
- Intel® Core™ i7-12700 Processor
- 128GB DDR5 system memory
- Fans are automatically controlled
- Up to 40W per slot at 35C
- Provides support for up to two 8-bay plug-in modules for testing U.2, M.2, U.3, CEM, EDSFF E1.S or EDSFF E3.S/L
- Ability to run unique tests on each SSD individually and concurrently
- Individual power cycling and power measurement under software control:
  - Support for 3.3V, 3.3V aux, 5V and 12V power rails
  - Power on/off to each port/device
- PWRDIS#, DUALPORTENT#, PERST#, REFCLK# supported and controllable
- CLKREQ#, HPT0, HPT1 supported
- Voltage and current measurement for each port/device (+/-50 microamps)
- Power measurement under various NVMe low power states
- Full hot-plug support
- Hot swappable devices under test
- Chassis Dimensions: Approx. 17" W x 28" L x 5.2" H
- Powered by the SVF / Enduro v5.0+ software

## OakGate R300-G5-Basic 3U Rackmount Appliance for PCI Express® Gen5 is a robust, versatile test system designed to test and debug solid state drives (SSDs) of all popular storage interfaces and protocols.

The R300-G5-Basic Appliance is ideal for small or medium test teams who need to test PCIe Gen5 SSDs, but do not require scalability.

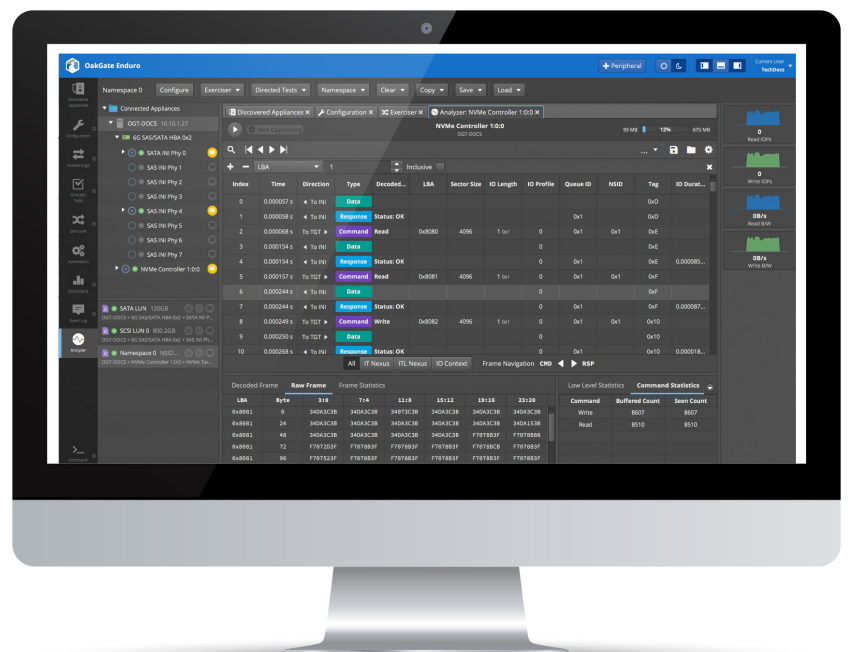
The R300-G5-Basic Appliance can connect up to two (2) optional OakGate 8-bay plug-in modules to test U.2, M.2, U.3, CEM, EDSFF E1.S or EDSFF E3.S/L SSDs.

The 3U Rackmount Appliance is powered by the OakGate Storage Validation Framework (SVF) engine, the industry's most advanced storage-testing software.

The robust SVF software, now in its fifth generation, offers a comprehensive set of testing features and capabilities.

Enduro with SVF supports a broad range of capabilities including deep protocol inspection and analysis, high performance traffic generation, full performance characterization, error injection, advanced test automation and power cycling.

The new Oakgate Gen5 platforms now offer power measurements and power cycling, all under software control.



## SOFTWARE FEATURES

<p><b>Protocol Support</b></p> <p>Enjoy the satisfaction of having built-in support for the storage industry's most popular and emerging protocols.</p>	<p><b>Traffic Generation</b></p> <p>Easily generate high-performance, randomized traffic profiles with I/O profiles. Includes support for Zoned Namespace.</p>	<p><b>Protocol Analyzer</b></p> <p>Effectively debug and analyze from early prototype bring-up through long-term I/O testing using the embedded protocol analyzer.</p>
<p><b>Protocol Conformance / Directed Tests</b></p> <p>Execute hundreds of built-in conformance tests that evaluate a device against its protocol, or create your own for maximum flexibility and control. OCP 1.0 supported.</p>	<p><b>Error Injection</b></p> <p>Inject error conditions to see how the DUT behaves in real-life situations.</p>	<p><b>Peripheral Control and Power Management</b></p> <p>Test your product's true limits with our industry-leading multi-vendor support for peripheral control and power management.</p>
<p><b>Point and Click Automation</b></p> <p>Create full automation suites without writing a single line of code using our integrated test automation tool.</p>	<p><b>Performance Benchmarking</b></p> <p>Deliver consistent benchmarking results, measure the true performance of the device under test, and generate a suite of performance analytics.</p>	<p><b>Data Validation</b></p> <p>Build confidence that your device behaves as intended and unconditionally keeps data intact, even under the most stressful power-loss situations.</p>

## Ordering Information

### Product Description

OakGate Gen5 3U Rack-mount Appliance

### Product Code

OGT-R300-G5-BASIC

#### Compatible M-Series 8-Bay Modules

Supports up to eight Add-In Card (AIC) NVMe drives  
 Supports up to eight single or dual-port E3 S/L Short or Long NVMe drives / Single/Dual-Port Mode  
 Supports up to four single or dual-port 25mm E1 Short NVMe drives / Single/Dual-Port Mode  
 Supports up to eight single or dual-port E1 Short NVMe drives / Single/Dual-Port Mode  
 Supports up to eight U.2 single or dual port 2.5-inch NVMe drives / Single/Dual-Port Mode  
 Supports up to eight U.3 single-port, 2.5-inch NVMe drives  
 Supports up to eight U.3 dual-port, 2.5-inch NVMe drives  
 Supports up to eight M.2 drives

OGT-MCEM-800-G5  
 OGT-ME3S-800-G5  
 OGT-MES25-400-G5  
 OGT-MES-800-G5  
 OGT-MU2-800-G5  
 OGT-MU3-801-G5  
 OGT-MU3-802-G5  
 OGT-MM2-800-G5



Local sales offices are located throughout the world.  
 Visit our website to find the most convenient location.

1-800-5-LeCroy • [teledynelecroy.com](http://teledynelecroy.com)

